

WATER FLOW SWITCH PAC-846

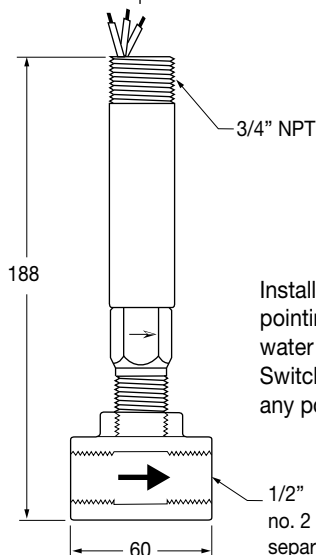
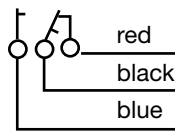
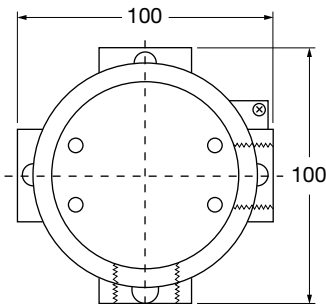
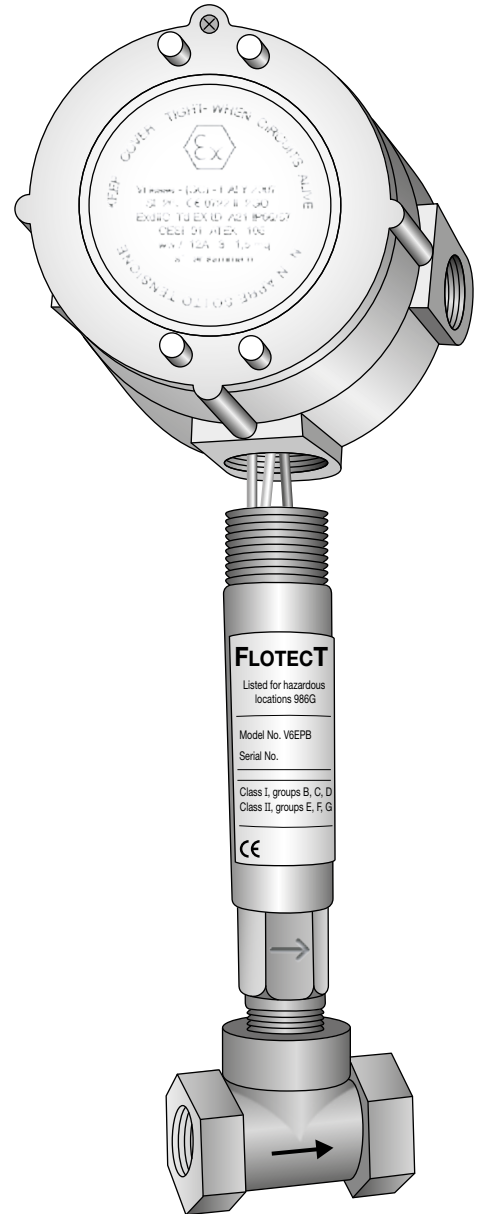
CE Ex II 3D T135°C

Designed to monitor the spray water flow in the UGN-820 (or other type) nozzle during the extinguishing operation.
 Installed upstream of the EVS-811 solenoid valve.
 When a water flow is detected then a contact is closed on the BLUE and BLACK leads.

Specifications

- Minimum water flow 6 lt/min (fixed preset).
- Max water pressure 17 bar.
- Brass tee coupling 1/2" female (3/4" adapters separately supplied).
- Changeover contact rated 1A 30Vdc.
- Electrical connections on terminal block inside the explosion-proof IP66 junction box separately supplied.
- Ground screws supplied on junction box both internally and externally.
- Operating temperature -20 +75°C (non condensing).
- Flow switch dimensions 188x60x35mm.
- Junction box dimensions 100x100x67mm.
- Packaging 280x150x130mm.
- Weight 1.5kg.

II 3D T135°C model (suitable for application on zone 22) complying with 94/9 Atex directive only if electrical connections are made inside the explosion-proof junction box separately supplied duty sealed so as to assure IP66 protection grade.



Install in piping with arrow pointing in direction of water flow.
 Switch can be installed in any position.

1/2"
 no. 2 3/4" adapters
 separately supplied